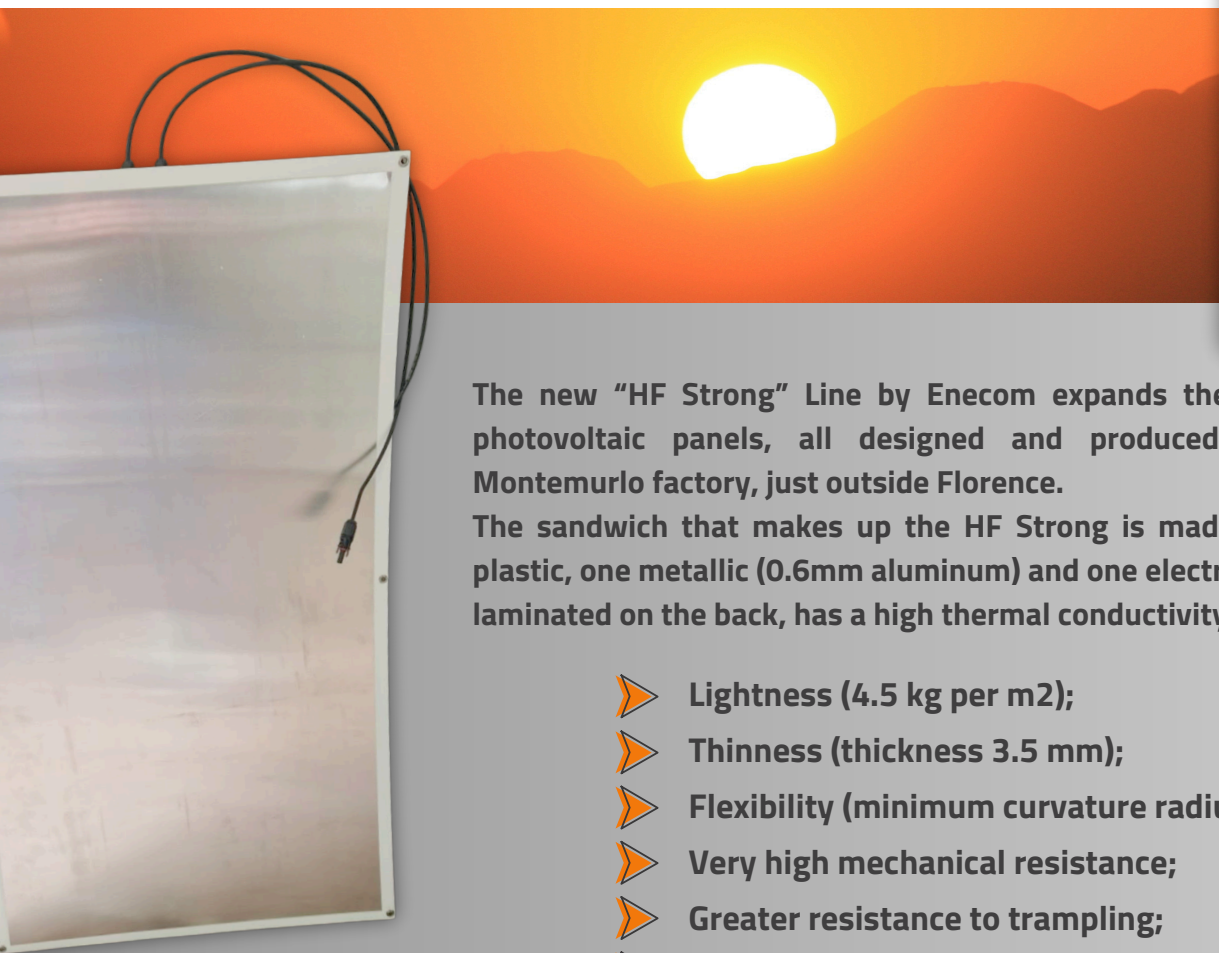
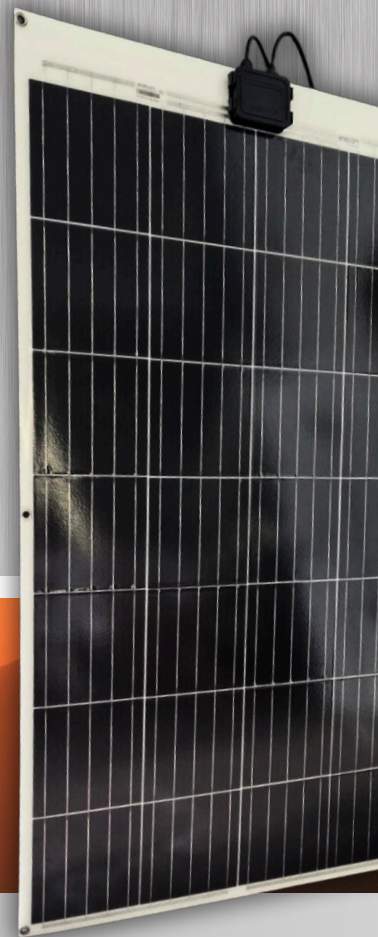


enecom

Hi-tech solar power

FLEXIBLE SOLAR PANELS

THE NEW ENECOM STRONG LINE



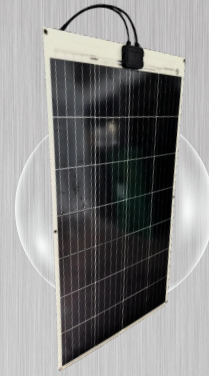
The new "HF Strong" Line by Enecom expands the range of Enecom photovoltaic panels, all designed and produced in Italy, in the Montemurlo factory, just outside Florence.

The sandwich that makes up the HF Strong is made up of 8 layers, 6 plastic, one metallic (0.6mm aluminum) and one electrical. The aluminum, laminated on the back, has a high thermal conductivity (220 W/m-K).

- Lightness (4.5 kg per m²);
- Thinness (thickness 3.5 mm);
- Flexibility (minimum curvature radius 1.5 m);
- Very high mechanical resistance;
- Greater resistance to trampling;
- Better heat dissipation.

The panels that make up the HF Strong Enecom line have peak powers of 145, 165, 185, 205 Watts. The panel can be supplied in various solutions.

- ☑ For installations on Bimini, tents or awnings:
 - with "Vela 31 stainless steel eyelets" for installations that require mechanical fixing;
 - with Tenax Loxx;
 - with hinges mounted on the longer sides;
- ☑ For installations on flat and rigid surfaces:
 - with strips of structural acrylic double-sided tape pre-applied on the back (thickness 1.1mm). This generates small air channels that promote convective heat exchange and heat dissipation.



MAIN FEATURES OF THE PANELS

ENECOM STRONG LINE PANELS				
	HFsrq 145	HFsrq 165	HFsrq 185	HFsrq 205
Peak power, Pmax (Wp)	145	165	185	205
Tolerance (%)	up to 5% only positive	up to 5% only positive	up to 5% only positive	up to 5% only positive
Open circuit voltage, Voc (V)	18,4	21,0	23,6	25,9
Short circuit current, Isc (A)	9,7	9,7	9,7	9,7
Tensione a Pmax, Vmp (V)	15,8	17,9	20,2	22,2
Corrente a Pmax, Imp (A)	9,2	9,2	9,2	9,2
Operating temperature (°C)	from -40 to +80	from -40 to +80	from -40 to +80	from -40 to +80
Form material	UVA resistant Plastic Polimer & Aluminium Plate 0,6mm	UVA resistant Plastic Polimer & Aluminium Plate 0,6mm	UVA resistant Plastic Polimer & Aluminium Plate 0,6mm	UVA resistant Plastic Polimer & Aluminium Plate 0,6mm
Dimensions (wxh) (m)	0,671 x 1,215	0,671 x 1,376	0,671 x 1,537	0,671x1,695
Thickness (mm)	3,2	3,2	3,2	3,2
Weight (kg)	3,7	4,2	4,6	5,1
Maximum system voltage (V)	600	600	600	600
Photovoltaic cells	n.28 m-Si 158,75x158,75 5BB	n.32 m-Si 158,75x158,75 5BB	n.36 m-Si 158,75x158,75 5BB	n.40 m-Si 158,75x158,75 5BB
Output terminals	1m Cables with MC4 connectors	1m Cables with MC4 connectors	1m Cables with MC4 connectors	1m Cables with MC4 connectors
Diodo bypass (A)	2 inside JB, 12A	2 inside JB, 12A	2 inside JB, 12A	2 inside JB, 12A

ENECOM – MADE IN ITALY CONTINUOUS INNOVATION